

2019 Mystery Quilt Challenge – February

Irving Quilt Guild by Susan Turk

Unit 3 (label and put in ziplock bag)

Instructions given for Lap Size. **Twin Size will be in parenthesis.**

Summary:

Make 24 (48) number of 4 patches using fabric 4 & 5 unfinished size should be 4 ½" X 4 ½"

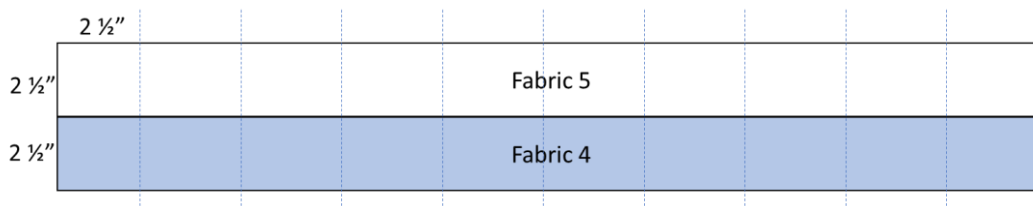
Detail Instructions:

Select the size of your quilt and if you are using Fat Qtrs (FQ) or Yardage (do not do both FQ and Yardage)

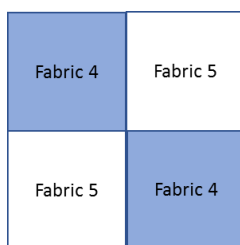
Cutting Instructions:

Fabric	Lap Size		Twin Size	
	Fat Qtrs (22")	Yardage (42")	Fat Qtrs (22")	Yardage (42")
Fabric 5	Cut 6 - 2 ½" Width of FQ	Cut 3 – 2 ½" WOF	Cut 12 – 2 ½" Width of FQ	Cut 6 - 2 ½" WOF
Fabric 4	Cut 6 - 2 ½" Width of FQ	Cut 3 – 2 ½" WOF	Cut 12 – 2 ½" Width of FQ	Cut 6 - 2 ½" WOF

- Sew each strip of Fabric 5 with each strip of Fabric 4 strip lengthwise for all strip sets.
- Press seam allowance towards Fabric 4 (away from light fabric).



- Sub cut these strip sets in 2 ½" segments. Each segment should measure 2 ½" X 4 ½".
- Arrange two segments, one flipped around so that like colors are diagonal from each other. Sew together, butting seams for a perfect match.



- Press seam allowance either way. The resulting four patch unit should measure 4 ½" x 4 ½". You can reduce bulk by fanning out seam allowance when you press four patches.

Tip: After sewing all the Fabric 5s with Fabric 4s on the long edge and pressing, you can put two long units right sides together where Fabric 5 faces Fabric 4 and then sub cut the 2 units together. The pair pieces will be ready to sew to make 4 patches

*** If you have any questions, please email Susan Turk (susanturk182@hotmail.com)